

guifi•*net*

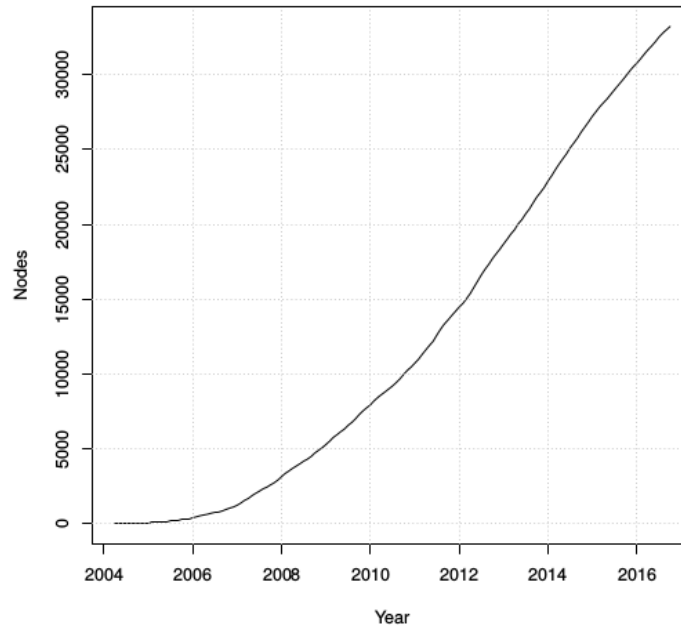


Ripe Meeting 28 / 10 / 2016

gabriel.lucas@guifi.net

CAPEX > 7M€

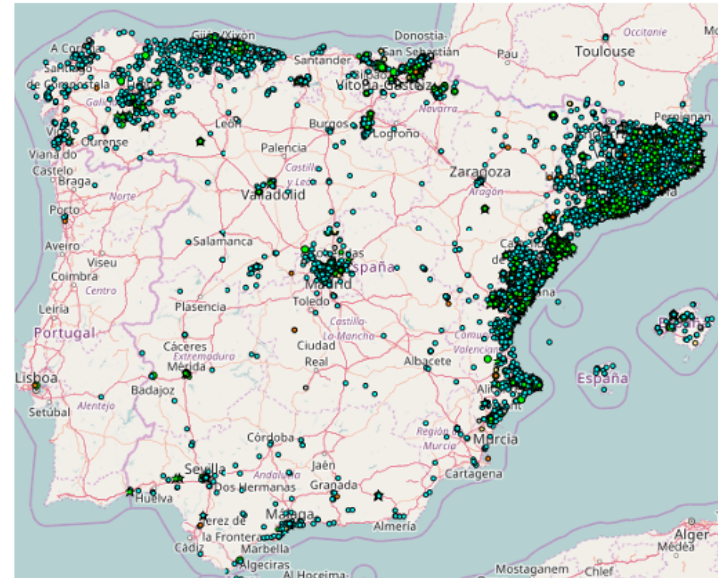
OPEX nearly 3M€ yearly turnover



(a) Total number of nodes over time.

32k nodes

18 Optical Fibre PoPs in Catalonia



(b) Nodes distribution (October 2016).

guifi.net



FIBER

&

WIFI



guifi.net



guifi·net Foundation

Non-profit, non-partisan, without conflicts of interest

<https://fundacio.guifi.net>

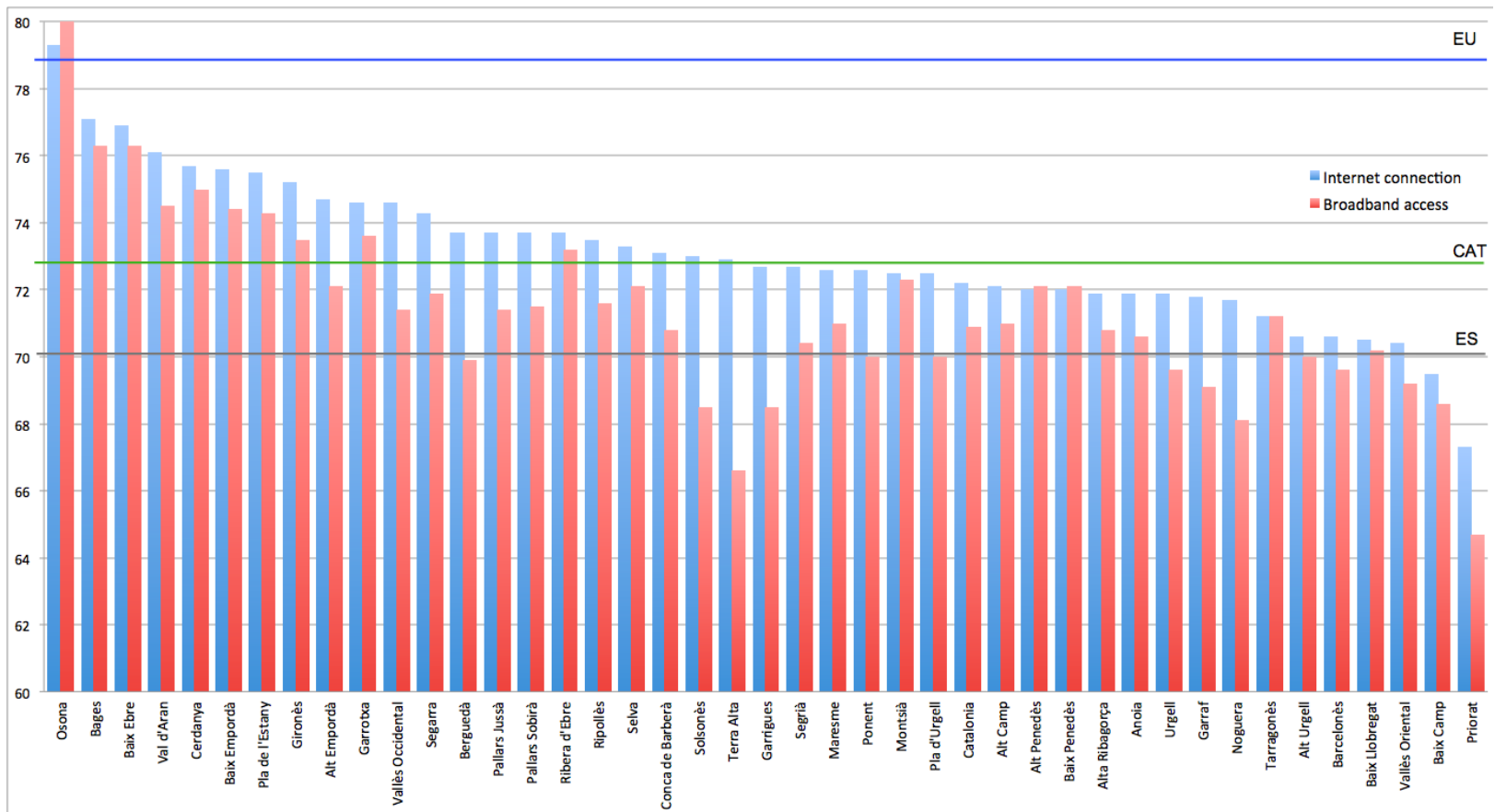


Awards:

- [2007 Catalan National Award](#) – category on Telecommunications
- [2015 European Broadband Award](#) – category on innovative model of financing, business and investment

guifi·net





Broadband & Internet (mobile) access to the Homes, source IDESCAT 2013

guifi.net





guifi.net

- **User Access / Last Mile**

- Goal: internet for everyone
- Typically 90% of the total cost
- Starting wireless
- Later, extending to Fibre Optics: Aerial, conduits...

- **Territorial Transport**

- Needed for Last Mile deployments' interconnection
- Reusing existing public infrastructures: Roads, Railways, Water pipes, Power lines, etc.
- “de facto” a large distributed neutral IX
- Already present in many Catalan counties

- **Full Transit**

- To the Carrier House and to the Regional IX (CATNIX)
- 10GB/s ports
- Redundant internet uplink (independent carriers)
- Peering with almost all the ISPs present at the IX



Commons Network



The main project of the **guifi·net Foundation** is the development of a telecommunication infrastructure based on the ideas studied by Elinor Ostrom: a commons-based telecommunication resource pool.

guifi·net is a commons-based telecommunication infrastructure of public interest, open to any telecommunications operator and to any person in equal conditions.

A network for defending the Human Right to Internet access as a basic tool for action and social inclusion, that fosters the social, solidary and collaborative economy and develops the Information Society.

guifi·net



The **guifi·net** Commons Network is:

Open: the **access and knowledge** about the network is **public and available to everybody**.

Free: Everyone can join. it guarantees people achieving the right to Access the Internet.

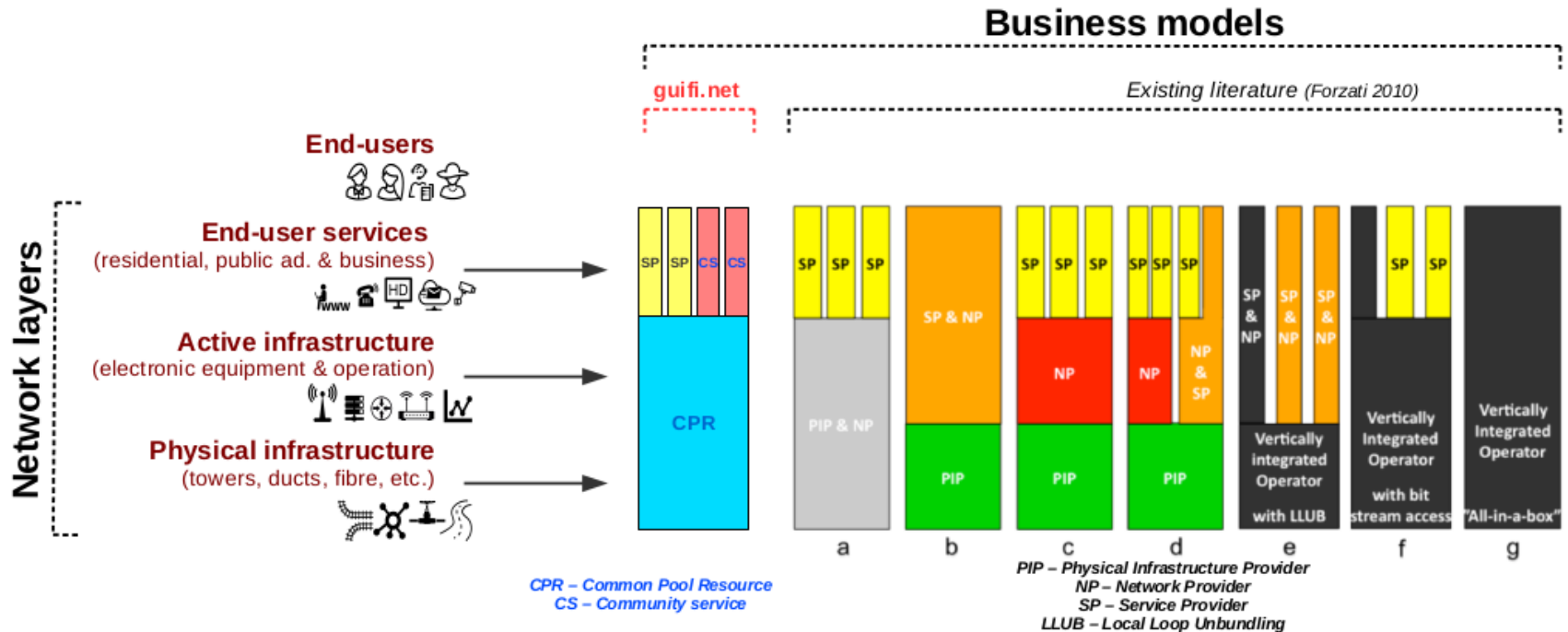
Neutral: the network infrastructure is neutral regarding the **contents** and **services** being carried.

Commons-based: different actors participate in the network managing and operating it as a common pool resource (CPR).

guifi·net



Open Acces Network model based on the commons



guifi.net



Governance Stack

Sustainable design

Based on collaborative economy

[E. Ostrom](#) (2009 Nobel Prize in Economics)

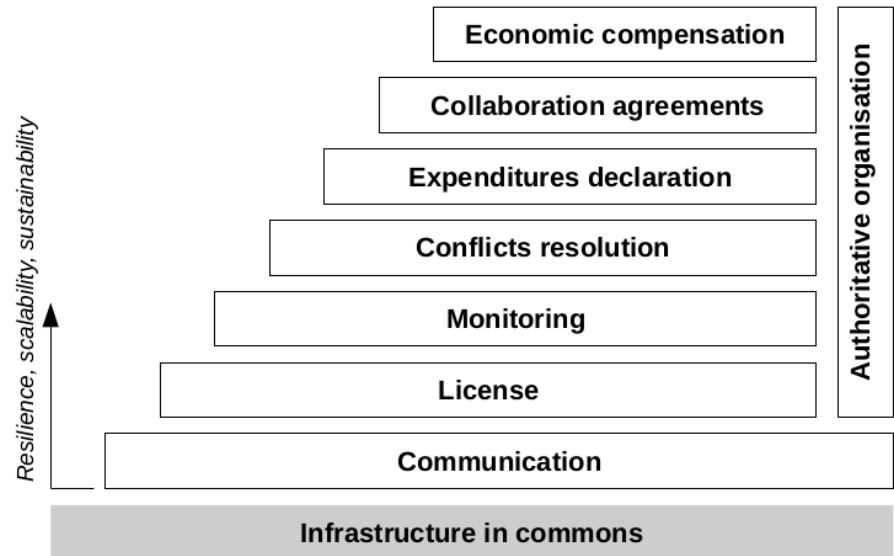
Based on free market but:

- Non-speculative
- Fair Trade

Accountable

Implemented through:

- signed agreements
- written consensus rules ([License Free](#), [Open](#), [Neutral Network](#))

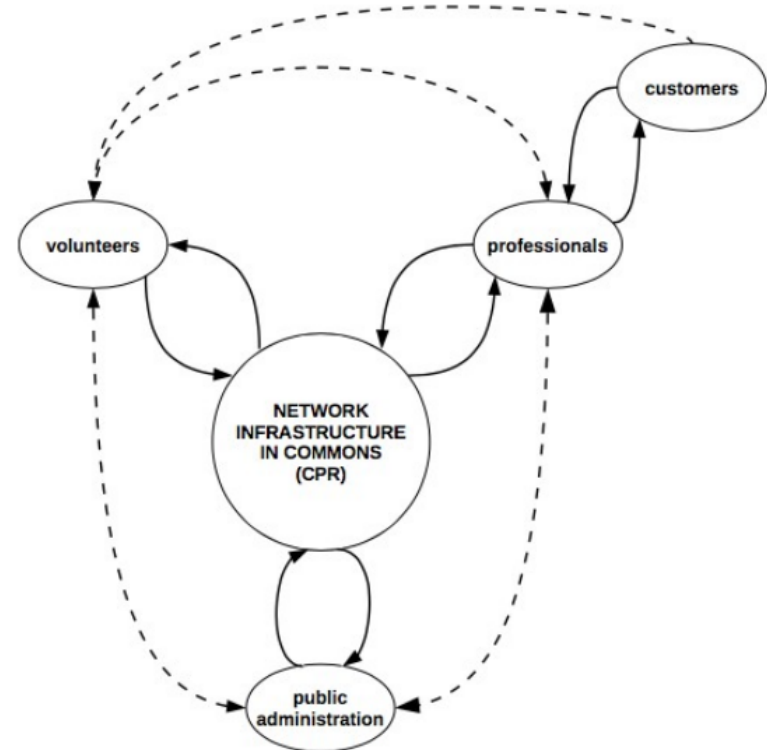


guifi.net



Relationships

- **Foundation**
 - Common Pool Resource (CPR) Governance
- **Public Administrations**
 - Manage Public Domains
- **Professionals**
 - Provide services
 - Generate Income from customers
- **Volunteers**
 - Contributing to the CPR



More details ...

Video European Broadband Award 2015

The guifi.net community network

R. Baig, R. Roca, F. Freitag, and L. Navarro, "guifi.net, a crowdsourced network infrastructure held in common", in Computer Networks: The International Journal of Computer and Telecommunications Networking, vol. 90, October 2015, pp. 150-165. <http://people.ac.upc.edu/leandro/pubs/crowds-guifi-en.pdf>

R. Baig, L. Dalmau, R. Roca, L. Navarro, F. Freitag, and A. Sathiaselalan. "Making Community Networks economically sustainable, the guifi.net experience.", in Proceedings of the 2016 workshop on Global Access to the Internet for All (GAIA '16), August 2016. http://exo.cat/~rbaig/pubs/CNs_sustainable.pdf

Davide Vega, Roger Baig, Lloren Cerdà-Alabern, Esunly Medina, Roc Meseguer, Leandro Navarro. "A Technological overview of the gui.net community network". <http://people.ac.upc.edu/leandro/docs/analysis.pdf>

guifi•net



BIG THANKS!

QUESTIONS ?

guifi·net

